

TransNet



Your Partners in Power

November 2018



LV JUICE

We're on our way.



EVworld South 2018

23-24 November

Air Force Museum | Christchurch



Join us at Stand 37 to see our Wallbox electric vehicle charging stations, Ratio chargers, and TransNet termination pits first-hand. We have EV products to suit home users, commercial installations, apartment complexes, utility networks, and more.

wallbox
plug & drive



This Month

DOES YOUR CABLE COVER COMPLY?

PAGE 3

COMPLETE EARTH FOR STREETLIGHT POLES

PAGE 4

CCG QUICKSTOP-EX LIQUID RESIN

PAGE 8

FREE TRANSNET GLASS COFFEE MUG

WHILE STOCKS LAST

When you spend over \$800 (excl GST) on one invoice this month



www.transnet.co.nz





GHFC GEL ENCLOSURES

The GHFC gel enclosure range provides a fast and simple method for insulating and environmentally sealing low-voltage cable taps and splices made with gel compression connectors. The enclosure utilises the innovative PowerGel sealing gel to protect the connection from moisture ingress, corrosion and pollution. Simply place the enclosure around the connection and press the enclosure together. It's that easy — no tapes, mastics, tools or mixing are required.

Molded cover of UV stable, impact resistant polypropylene provides rugged protection for underground or overhead applications.

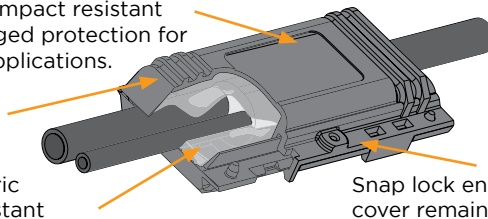
Frangible fingers provide wide cable range.

Silicone gel is highly dielectric insulation and provides constant pressure on cable and connector to provide waterseal. PowerGel sealing gel is specially formulated for high temperature environments.

FEATURES

- Easy re-entry; Raychem PowerGel peels away easily leaving a clean connection
- Ideal for street lighting and service applications
- Enclosures provide rugged protection; UV, impact and abrasion resistant
- Qualified for temperatures from -40°C to 90°C

*Connectors not included



Snap lock ensures that cover remains closed.

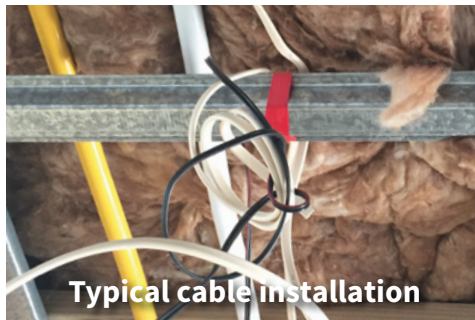


Cat No.	Cable Size (mm ²)		Dimensions (mm)		
	Main	Tap	L	W	H
GHFC-1-90	16-35	2.5-10	70	41	27
GHFC-2-90	35-70	2.5-16	108	51	30
GHFC-2.5-90	50-95	16-85	179	70	40
GHFC-3-90	185	95	159	83	49



Raychem
from TE Connectivity

WELL-HUNG SUPPORT BRACKET



#WELL-HUNG
\$2.40
+ GST EACH.*



Are You Well-Hung

Well-Hung Support Bracket

NZ designed and manufactured, the Well-Hung Support Bracket facilitates effortless installation of electrical and data cables on metal formed and wooden ceiling and wall battens. The bracket clips or screws to a multitude of batten profiles and trusses, ensuring cables are contained safely within the bracket catchment rather than landing

in the batten tray - avoiding the risk of electrocution from screws penetrating up through them.

Features

- Cables securely contained
- Quick and easy to install
- Reduced labour costs
- Ensures tidy wiring

Proudly supporting:



FREE PACK OF CHOCOLATE BLUEBERRIES

with every box of 100 Well-Hung sold this month (while stocks last)

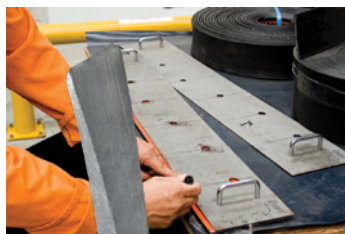




DOES YOUR CABLE COVER COMPLY?



**DANGER ELECTRIC
CABLES BELOW**



Manufactured in New Zealand from recycled High Density Polyethylene (HDPE), TransNet Cable Cover is designed to protect the cables/pipes it is covering, with two ranges available. Contaminant free post manufacture waste is collected from around New Zealand by Astron Plastics and recycled in one of their two New Zealand factories - Auckland and Christchurch.

AS/NZ4702-2000 PENETRATION TEST

One of the most important requirements of AS/NZ4702-2000 is that cable cover must pass a penetration test, where a specifically designed dart of known weight is dropped from a predetermined height through 125 joules of energy, representing potentially catastrophic damage to the cable cover. The cable cover passes the test only when the dart penetrates it by less than 50mm. Confusion is created with the reference to thickness of material. Cable cover to AS/NZ4702-2000 standard does not adhere to a thickness, it is determined by strength resulting from the penetration test.

TransNet Cable Cover undergoing a penetration test

WHAT MAKES TRANSNET AS/NZ4702-2000 CABLE COVER DIFFERENT

- Passes a penetration test allowing no more than 50mm penetration
- Consistently strong throughout the body of the product
- Shows manufacturer, supplier and applicable standard on the top laminate
- NZ made from recycled HDPE plastic - post manufacture clean scrap plastic only
- No contaminants
- Thinner and lighter while consistently complying with AS/NZ 4702 standard strength requirements
- Custom widths available on request (MOQ & lead times apply)
- Retains mechanical strength characteristics even in extreme temperatures
- Every batch of AS/NZ4702-2000 compliant cable cover is tested throughout the manufacturing process to ensure it consistently complies
- Gas and Electricity specific product available
- CCASNZ available ex stock

**DANGER ELECTRIC
CABLES BELOW**



**DANGER ELECTRIC
CABLES BELOW**



**DANGER ELECTRIC
CABLES BELOW**



**DANGER ELECTRIC
CABLES BELOW**



**DANGER ELECTRIC
CABLES BELOW**



**DANGER ELECTRIC
CABLES BELOW**



3MM AND 5MM THICKNESS RANGE - **NOT COMPLIANT** WITH AS/NZ4702-2000 STANDARD

Cat No.	Description	Length
CC100X3X25	ROLL 100MM X 3MM	25M
CC100X5X25	ROLL 100MM X 5MM	25M
CC150X3X25	ROLL 150MM X 3MM	25M
CC150X5X2	STRIP 150MM X 5M	2M+
CC150X5X25	ROLL 150MM X 5MM	25M
CC200X3X25	ROLL 200MM X 3MM	25M
CC200X5X25	ROLL 200MM X 5MM	25M
CC300X5X25	ROLL 300MM X 5MM	25M

*Additional sizes available on request
+ Pallet lots only



MADE TO AS/NZ4702-2000 STANDARD PENETRATION TEST REQUIREMENTS

Cat No.	Description	Length
CCASNZ4702-150X1	STRIP 150MM X AS/NZ4702-2000	1M+
CCASNZ4702-150X25	ROLL 150MM X AS/NZ4702-2000	25M
CCASNZ4702-170X2	STRIP 170MM X AS/NZ4702-2000	2M+
CCASNZ4702-170X25	ROLL 170MM X AS/NZ4702-2000	25M
CCASNZ4702-200X25	ROLL 200MM X AS/NZ4702-2000	25M
CCASNZ4702-250X2	STRIP 250MM X AS/NZ4702-2000	2M+
CCASNZ4702-250X25	ROLL 250MM X AS/NZ4702-2000	25M
CCASNZ4702-300-2	STRIP 300MM X AS/NZ4702-2000	2M+
CCASNZ4702-300X25	ROLL 300MM X AS/NZ4702-2000	25M
GPCASNZ4702-150X1	YELLOW GAS PIPE COVER 150MM X AS/NZ4702-2000	1M+
CCASNZ150X5X750MM	GREEN TELECOM CABLE COVER 150MM X AS/NZ4702-2000	.75

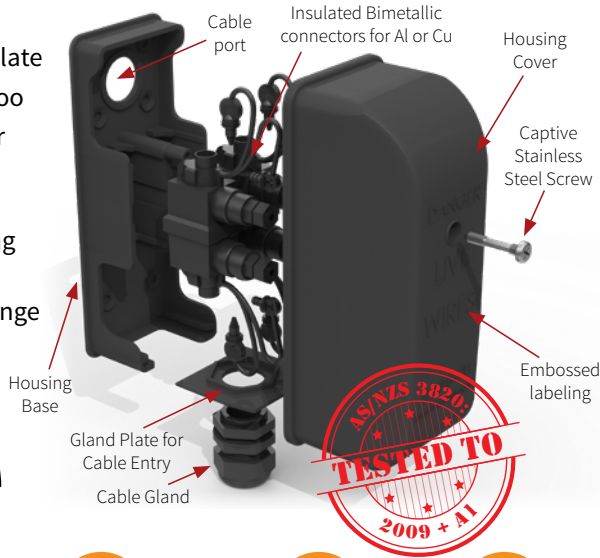
MAKE SAFER, LONGER-LASTING CONNECTIONS



TRANSNET MAINS ENTRY BOX 1 PHASE

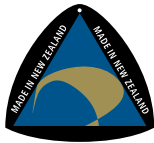
FEATURES

- Main cable supported by gland in gland plate
- Gland plate perfect fit for conduit gland too
- Strip length clearly outlined on connector body
- Electrical test points and test point caps built into connector bolt for ease of testing
- Insulated bimetallic connectors will terminate AL/CU cables, 4mm²-35mm² range



#TNMEB1PH

81.5mm W x 206.50 H x 77mm D



SHEAR BOLT CONNECTIONS
Perfect connection every time



SECURE SCREW
Captive Stainless Steel cover screw



SAVE TIME
Make off connectors outside enclosure



UV STABLE PLASTIC
Won't shatter



SAFER
No bare parts

ALSO AVAILABLE IN 2 & 3 PHASE

COMPLETE EARTH FOR STREETLIGHT POLES

TNSLGR3 FEATURES

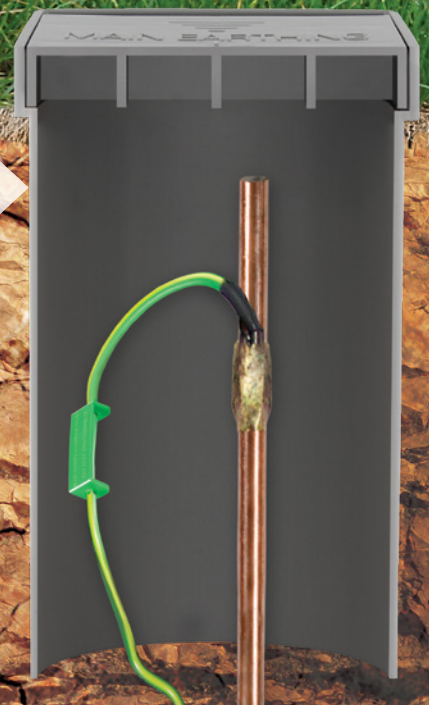
- 13mm copper bonded rod
- Pre-welded
- 3m of 10mm² cable attached
- Cadweld and copper conductor included
- Able to be buried
- Position of the weld allows for the driving tip to be used on the rod
- Room underground for connection
- ERICO rod 1840mm long

Pictured with #TNERIB Earth Rod Inspection Box & #TNEARTH TAG (not included)

OTHER CABLE SIZES & LENGTHS AVAILABLE ON REQUEST

ERICO

PRODUCT # TNSLGR3



All Specials and Products featured in TRANSNET JUICE are available from all good electrical wholesalers.



WHY CHOOSE RAYCHEM?



TRUST RAYCHEM TECHNOLOGY TO KEEP WORKING EVEN WHEN YOU AREN'T

Raychem was the first company to develop products using "radiation chemistry", discovering that the process of crosslinking allows material to be heated, expanded and cooled, and later reheated to its original size for superior insulation and protection. Heatshrink tubing is the result of this revolutionary process.



50

COUNTRIES

90,000

EMPLOYEES



Raychem exerts control over every aspect of the production process, from sourcing materials to R&D to manufacture and distribution. Start to finish, Raychem makes sure every aspect of their operation adheres to the highest standards so that you always know what to expect.

Raychem has supplied parts to millions of installations in some of the most severe service conditions. Distinguished by high mechanical toughness and resistance to weathering and chemicals, Raychem products are synonymous with reliability in extreme environments.



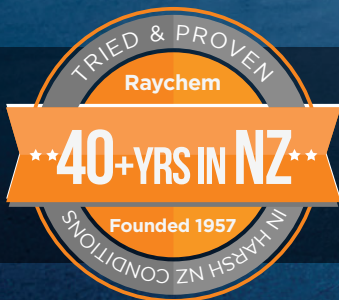
60 40 30

YEARS YEARS YEARS

of material science backing Raychem technology

of development & enhancements behind Raychem cable accessories

without maintenance is typical for TE's heat shrink products



Leaders in cross-linking technology, the Raychem product line provides high levels of service, quality, and decades of experience, with products that continue to perform in the field for 40 years and counting. Our customers appreciate knowing that the products they install will work even in the harshest environments New Zealand has to offer.





MAINLINE MOVEABLE POWER & DATA

Adjustable, Scalable Power When & Where You Want It

Connect and power all of your gadgets and appliances whenever you want, wherever you want. This innovative power track allows anyone to simply and safely add, remove or reposition power and data sockets wherever and whenever they are needed along its length. The Mainline system can be seamlessly installed into walls, skirting boards or trunking systems in a fraction of the time it takes to install conventional fixed sockets.

FEATURES

- Suitable for new constructions, renovations & refurbishment projects
- Can be installed as part of a ring, radial or spur
- Restricted access to copper busbar from small objects & fingers
- Not limited by number of sockets
- Up to 32 amp capacity
- Moveable data networking socket
- Range of finishing options available
- Terminal Block connects existing live, neutral & earth wires to the track itself
- 2 metre lengths can be cut to fit space

Mainline
Trunking
Starter
Kit

MLSTARTWH
\$229
+ GST



MLSTARTWH Mainline Starter Kit 2.0m		Qty
ML20W	TRACK KIT 2.0M - WHITE	1
MLEX21	MAINLINE TRACK HOUSING 2.1M	1
MLTSLW	TS TERMINAL BLOCK KIT (LEFT) - WHITE	1
MLTSERW	TRACK TS END CAP (RIGHT) - WHITE	1
MLP1W	PREMIUM TYPE ADAPTOR - WHITE	2



CABLEAWAY PU FLOOR OUTLET BOXES

Our plastic floor outlet boxes are an ideal way to supply power, data and A/V to open floors of a commercial office building or residential home.

POWDER COATED ZINC ANNEALED STEEL BODY

9MM RECESSED PLASTIC LID

20MM AND 25MM KNOCKOUTS PROVIDED FOR EASY CONDUIT ENTRY

DUAL CABLE EXIT FLAPS

FOUR AUTO SWITCHED POWER OUTLETS SUPPLIED

PROVISION FOR EIGHT CAT5 OR CAT6 DATA PORTS



SHARP PRICE FBPL4P8D-NZ
\$299 + GST

cable.
away

Better Cable Management



METREL MD116 NON-CONTACT VOLTAGE DETECTOR

The MD116 is an easy-to-operate non-contact voltage tester with optical, acoustical, and vibrating indicator options, and features a pocket clip for portability. It can detect live voltage wires in splices, cable plugs, cable drums, sockets, switches and junction boxes, and uses a capacitive measuring process – in contrast to inductive measurements, no flow of current is required.

FEATURES

- Cat IV/1000V overvoltage protection
- IP65 rating
- Lightweight and portable
- Easy to operate

APPLICATIONS

- General purpose detection
- Low level electrical testing
- Hobby work

STANDARDS

- IEC60529
- IEC/EN61010
- IEC/EN61140
- IEC/EN61326-1

KIT CONTENTS

- Non-contact voltage detector
- 1.5V AAA batteries x2
- Instruction manual
- Warranty

Technical Data

DISPLAY	OPTICAL, ACOUSTICAL, VIBRATING
MEASUREMENT RANGE	12-1000V AC
FREQUENCY RANGE	40-400HZ
TEMPERATURE RANGE	0°C TO +40°C, <80% RELATIVE HUMIDITY
CURRENT CONSUMPTION	80MA
DUTY CYCLE	CONTINUOUS
POWER SUPPLY	2 X 1.5V AAA BATTERIES
OVERVOLTAGE CATEGORY	CAT IV/1000V
DEGREE OF PROTECTION	IP65
DIMENSIONS	155 X 25 X 23MM
WEIGHT	APPROX. 58G

VIBRATING INDICATOR

LED FLASHLIGHT

MEASURING FUNCTIONS

- Non-contact voltage detection from 12 V AC
- Optical, acoustical, and vibrating indication in case of power
- 12 V – 1000 V AC measurement range
- Automatic self-test



MULTI-COMPARTMENT TOOLBOXES

These handy toolboxes are easy to carry with a solid handle and carry strap, and feature removable compartments.

Replacement boxes in three sizes are available if you need to reconfigure your toolbox storage sizes.



BOX-A
95X65X65MM

BOX-B
140X65X65MM

BOX-C
290X65X65MM



Cat No.	Description
BOX366	TOOLBOX 12 COMPARTMENT - 6 x A-TYPE, 4 x B-TYPE, 2 x C-TYPE
BOX399	TOOLBOX 18 COMPARTMENT - 18 x A-TYPE
BOX-A	REPLACEMENT BOX W/PARTITION 95x65x65MM
BOX-B	REPLACEMENT BOX W/PARTITION 140x65x65MM
BOX-C	REPLACEMENT BOX W/PARTITION 290x65x65MM

BOX366

All Specials and Products featured in TRANSNET JUICE are available from all good electrical wholesalers.

PLUG THOSE GAPS

CCG QuickStop-Ex™ Liquid Resin



TransNet New Zealand Ltd

Auckland

78 Cryers Road
East Tamaki
Auckland
NEW ZEALAND
Ph 0800 442 182
Fax 0800 442 183
PO Box 39 383
Howick, Auckland

Wellington

10 Petone Ave
Petone
Wellington
NEW ZEALAND
Ph 04 576 2530
Fax 04 576 0040
PO Box 39 383
Howick, Auckland

NEW ZEALAND

sales@transnet.co.nz

TransNet Tonga

Ma'ufanga

Small Industries
Ma'ufanga
TONGA
Ph +67 627 939
Fax +67 627 976
PO Box 2932
Nuku'alofa

TONGA

transnet@kalianet.to

A liquid pour resin is extremely effective in filling all the voids and gaps in a cable as the resin flows into all interstitial spaces.

CCG's QuickStop-Ex™ instant mixing, injecting resin system has all but eliminated the hassles surrounding the preparing, mixing, and applying of compounds/resins in Barrier Glands. The QuickStop-Ex™ Injection Resin™ system is instantly and 100% accurately mixed whilst being simultaneously injected into the barrier gland in one single action, reducing the installation time and giving an increased confidence in the installation compared to the sachet mix liquid pour resin system.

Cables are completely filled and sealed with a quick setting injection resin which flows into all the cable voids and interstices. This forms a 100% barrier to any migration of gases, fluids or dusts down the inside of an unfilled hygroscopic cable.

CCG's QuickStop-Ex™ Injection Resin™ system has passed the stringent weathering, heat cycling, and 30-bar pressure tests according to the latest IEC Standards which are: IEC 60079-0 Ed 6, IEC 60079-1 Ed 6, IEC 60079-31 Ed 1, IEC 60079-7 Ed 4 and IEC 60079-15 Ed 3.

CCG's QuickStop-Ex™ Barrier Glands are certified as follows: Ex db IIC, Ex eb IIC, Ex t IIIC, Ex nR.

Certificate Number: IECEx ITA 12.0014X.

100% Safe & Effective

QuickStop-Ex™ liquid resin flows into and fills all the voids in unfilled multi core cables, displacing all air and guaranteeing a 100% perfect barrier seal, unlike traditional putty filled barrier glands requiring specialized skill and care to install.

Easy To Use

QuickStop-Ex™ Injection Resin is held in injection tubes and with a vortex mixing nozzle it requires just one hand to mix and apply.

Instant Accurate Mixing & Simultaneous Injection

QuickStop-Ex™ Injection Resin is instantly and accurately mixed and then simultaneously injected in just one action through the vortex mixing nozzle, completely eliminating the time taken as well as the risks involved which are prevalent when premixing other forms of resins.

Quick Setting

QuickStop-Ex™ Resin sets in just minutes – at 20°C it takes 15 minutes and at 40°C it takes just 8 minutes to set.

Longer Shelf Life

Because QuickStop-Ex™ Injection Resin™ is held in two separate mixing tubes, there is no risk of diffusion between the resin and the activator, as is the case with a sachet mix system. Therefore there are no cumbersome cold storage requirements.

RESIN COMES WITH CCG ~QS BARRIER GLANDS



CCG[®]
CABLE TERMINATIONS

